



Manifest Technologies

*Transforming CNS therapeutics through
computational neuroimaging*



Disclaimer

This presentation has been prepared solely for the purpose of providing you with information about Manifest Technologies Inc., a Delaware corporation (the “Company”). The information contained in this presentation does not purport to contain all of the information that you may need or desire. You should conduct your own investigation and analysis of the Company and of the information contained in this presentation, and should rely solely on your own judgement, review and analysis in making any decisions in connection with the Company.

This presentation does not constitute an offer to acquire securities, which may be made only pursuant to definitive offering documents provided by the Company. This presentation is for informational purposes only and is not a prospectus or other offer document under the law of any jurisdiction.

This presentation includes certain forward-looking statements, estimates and projections that involve subjective views of the anticipated future performance of the Company that may or may not be correct. Such forward-looking statements, estimates and projections are not guarantees of future performance and involve known and unknown risks, uncertainties and other factors, many of which are outside the control of the Company.

The Company and its representatives may amend or replace this presentation at any time and are not obliged to provide you with any additional information, or to update or correct any inaccuracies in this presentation.

This presentation is provided to recipients on a confidential basis. It must not be copied or disclosed to any third party, in whole or in part, without the Company’s prior written consent. If you are not the intended recipient of this presentation, please notify the Company immediately and destroy all copies of this presentation, whether held in electronic or printed form or otherwise.



Team

International leaders in computational psychiatry & clinical neuroimaging.

Board of Directors



Robert Berman, M.D.
Independent Board Member
Co-Founder & former CMO,
BioHaven Pharmaceuticals



Alan Anticevic, Ph.D.
Co-Founder & CEO
Associate Professor
Psychiatry & Neuroscience
Yale University



John Murray, Ph.D.
Co-Founder
Associate Professor
Psychiatry & Physics
Yale University



Markus Helmer, Ph.D.
Co-Founder & CTO
Manifest Technologies



Jie Lisa Ji, Ph.D.
Head of Biomarker
Development
Manifest Technologies



Jeanne Bertonis
Head of Business
Development
Manifest Technologies



Lining Pan
Neuroinformatics
Engineer
Manifest Technologies

Strategic Advisors



John Krystal, M.D.
SAB Chair
Professor & Chair
Psychiatry
Yale University



David Gray, Ph.D.
CSO
Vigil Neuro



Anshu Vaish, M.D.
Stealth Biotech



Zailyn Tamayo, M.S.
Informatics DevOps
Director Imaging Tech.
Psychiatry
Yale University



Clara Fonteneau, Ph.D.
PET Imaging
Research Scientist
Psychiatry
Yale University



CNS drug development is risky and expensive

\$2B

**R&D investment required
per one new drug**

4%

**of psychiatry drugs receive
approval from preclinical**

86%

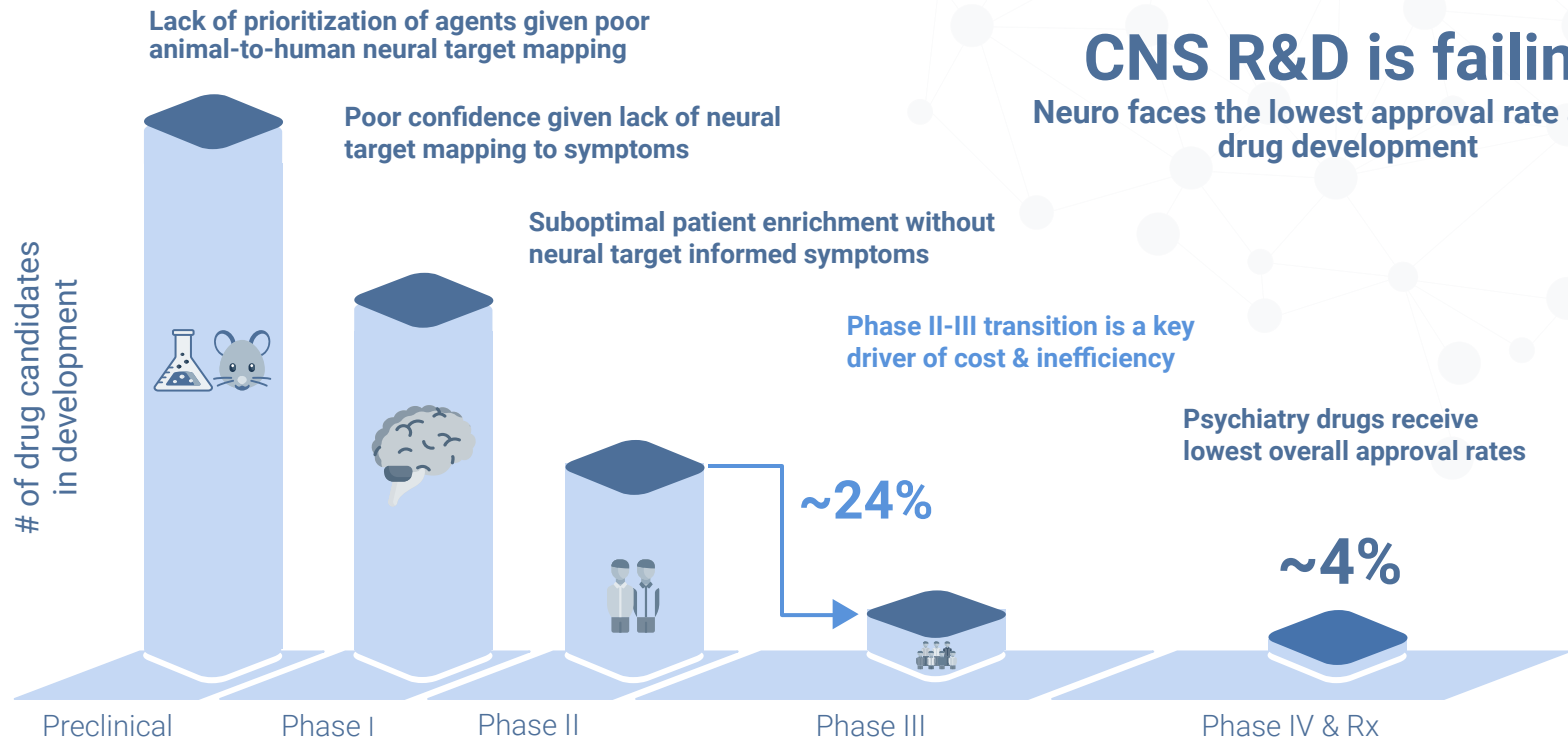
**of clinical trials fail due to
unsuitable patients**

High cost and failure rates driven by an inability to target specific brain circuits and therefore patients who would benefit most

Harrer et al., 2019, Fogel, 2018



Most assets fail too late, driving cost and inefficiency

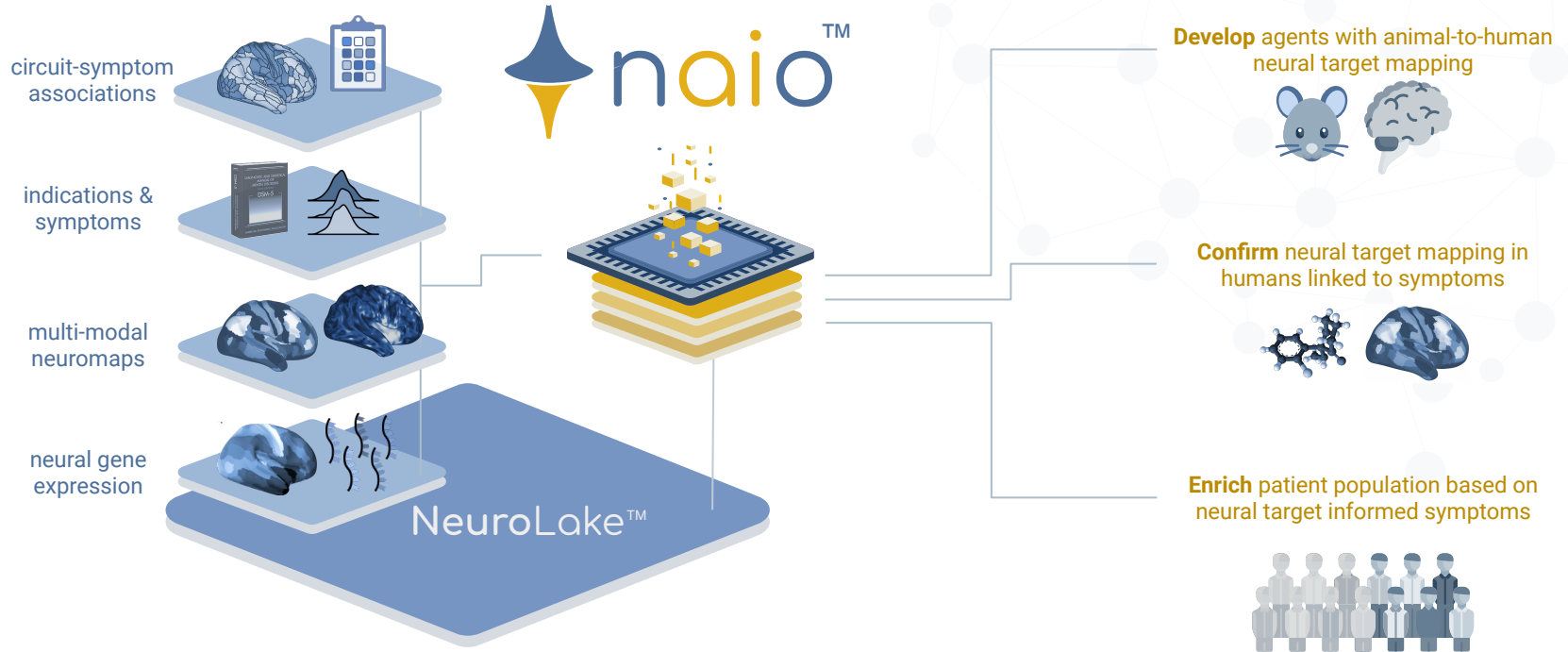


CNS R&D is failing

Neuro faces the lowest approval rate across drug development



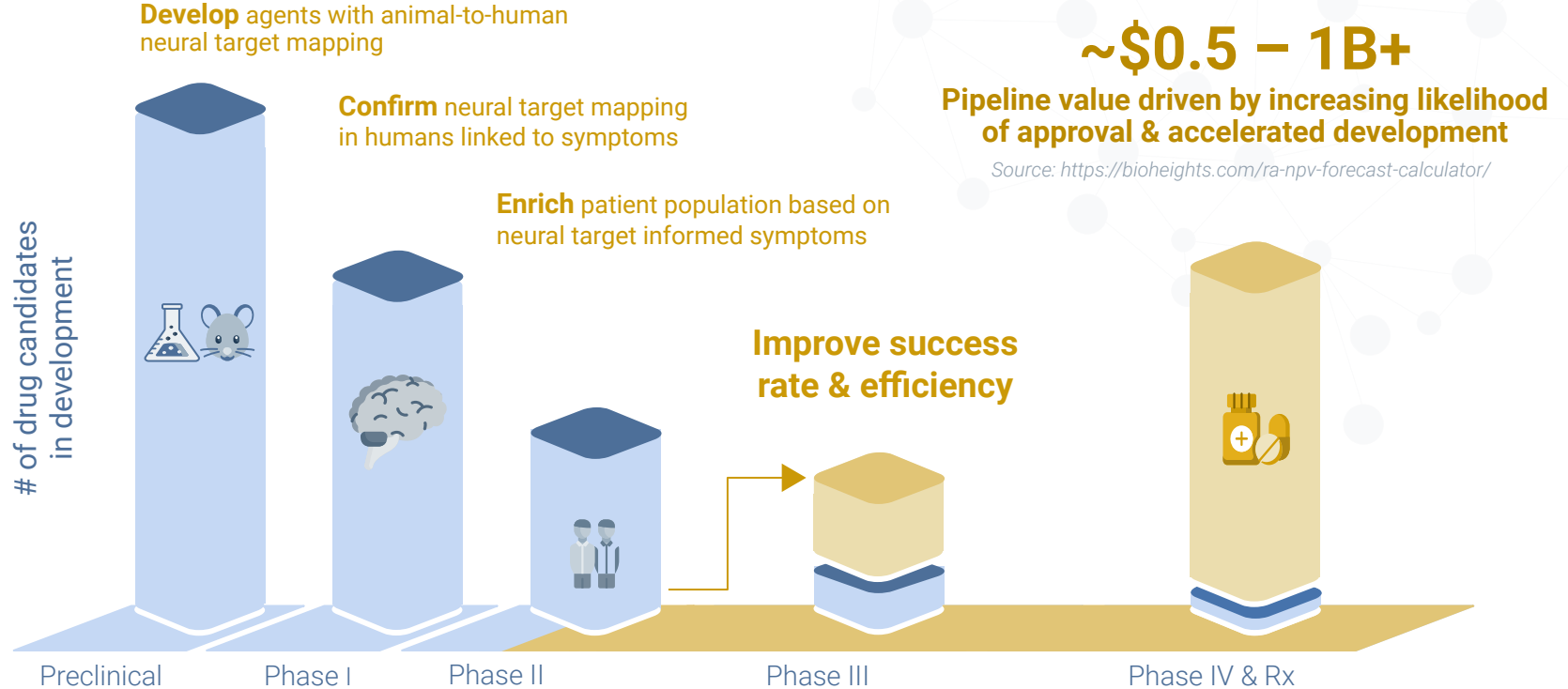
Manifest solves major cost and efficiency barriers in CNS trials



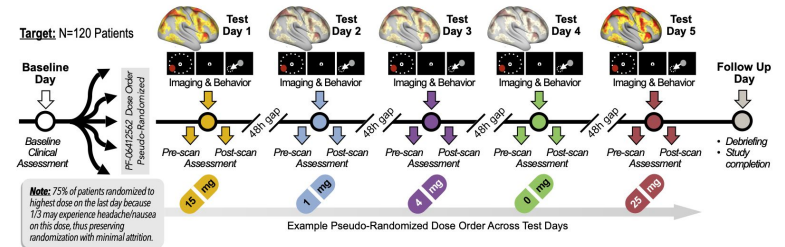
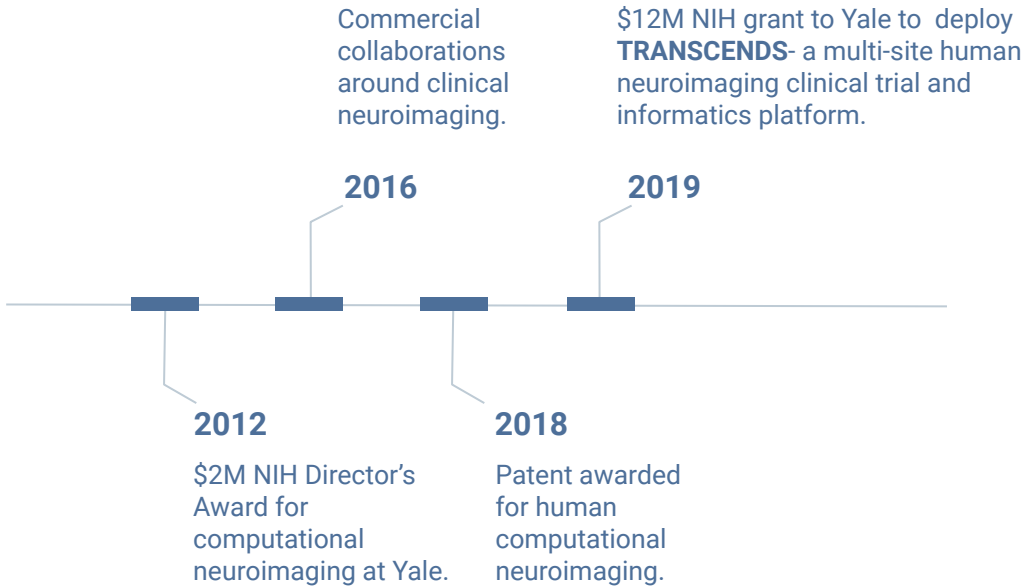
Our platform automates multimodal animal & human neuroimaging processing and analytics to address key bottlenecks in CNS R&D



Manifest transforms asset development



10+ years of innovation at Yale laid NAIIO's foundation

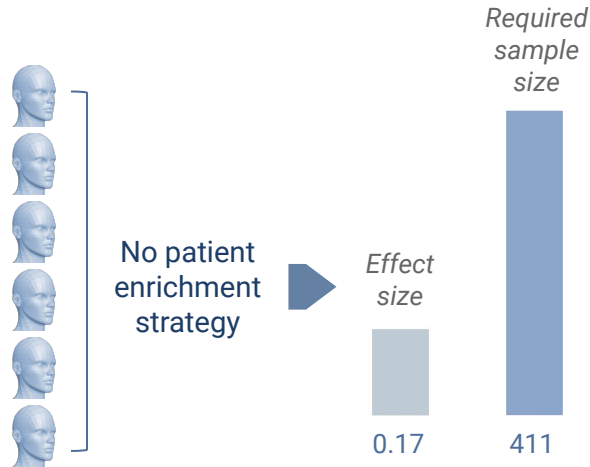


<https://clinicaltrials.gov/ct/show/N2CT04457310>

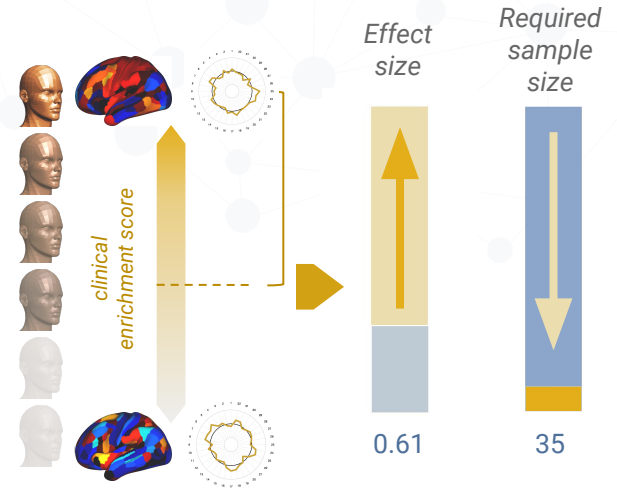


Manifest can fundamentally alter the success of a clinical trial

Status Quo



- Our ML-optimized clinical enrichment score drives precise patient selection, would have enriched the trial with high responders
- Therefore, using our proprietary patented approach a failed depression trial would have been successful with better power, resulting in less time and lower cost



WEAK EFFECT NECESSITATES MANY TRIAL PARTICIPANTS



STRONG EFFECT NECESSITATES FAR FEWER PARTICIPANTS





Q & A

Thank you for your attention

alan.anticevic@manifesttech.io

